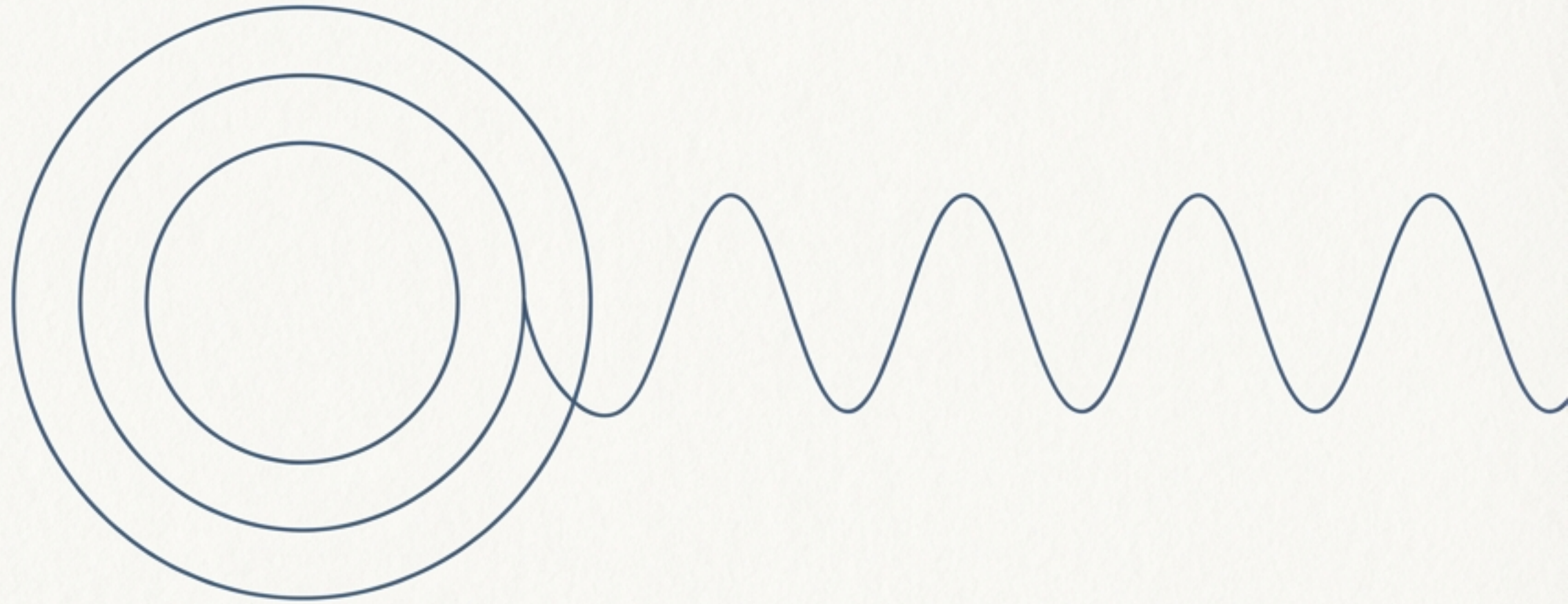
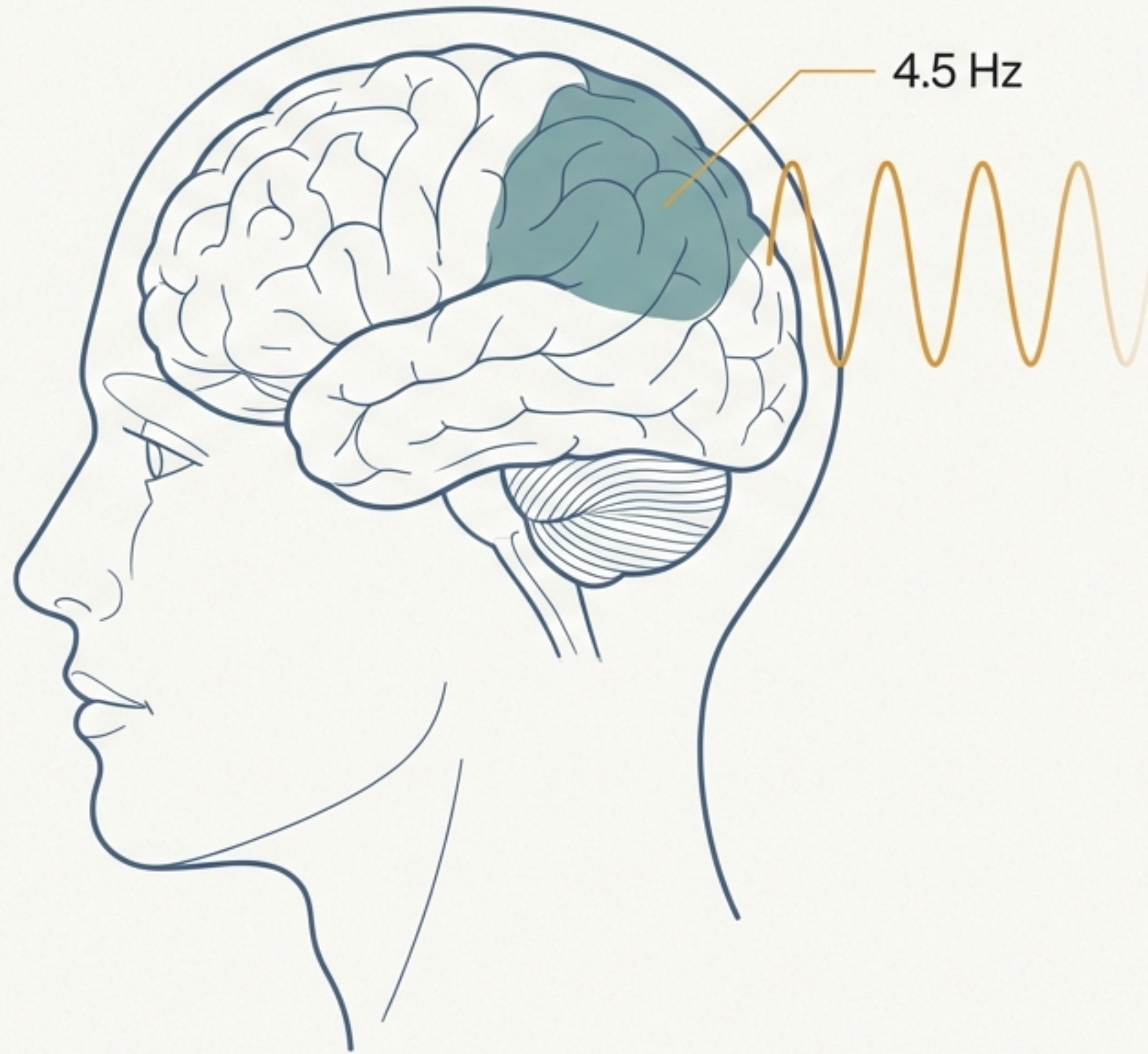


Genetic Modulation of Neural Coherence

An ODTBT-Based Framework for Understanding
MTHFR-Linked EEG Endophenotypes in Autism



Based on the work of John Surmont, Independent Researcher



A Signal in the Noise: The 4.5 Hz Anomaly

Key Finding: A distinct 4.5 Hz EEG rhythm was identified in the parieto-temporal regions of children with both Autism Spectrum Disorder (ASD) and MTHFR gene variants. (Ezedinma et al., 2024)

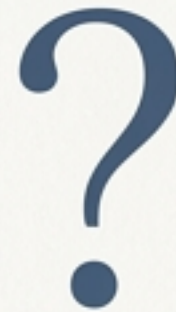
Crucial Detail: This signal was *not* observed in neurotypical children or in children with ASD who lacked the MTHFR variant. It is also accompanied by reduced alpha power.

The Transductive Gap: From Gene to Brainwave

How does molecular inefficiency at the genetic level translate into a coherent, system-wide brain rhythm?



MTHFR Gene Variant

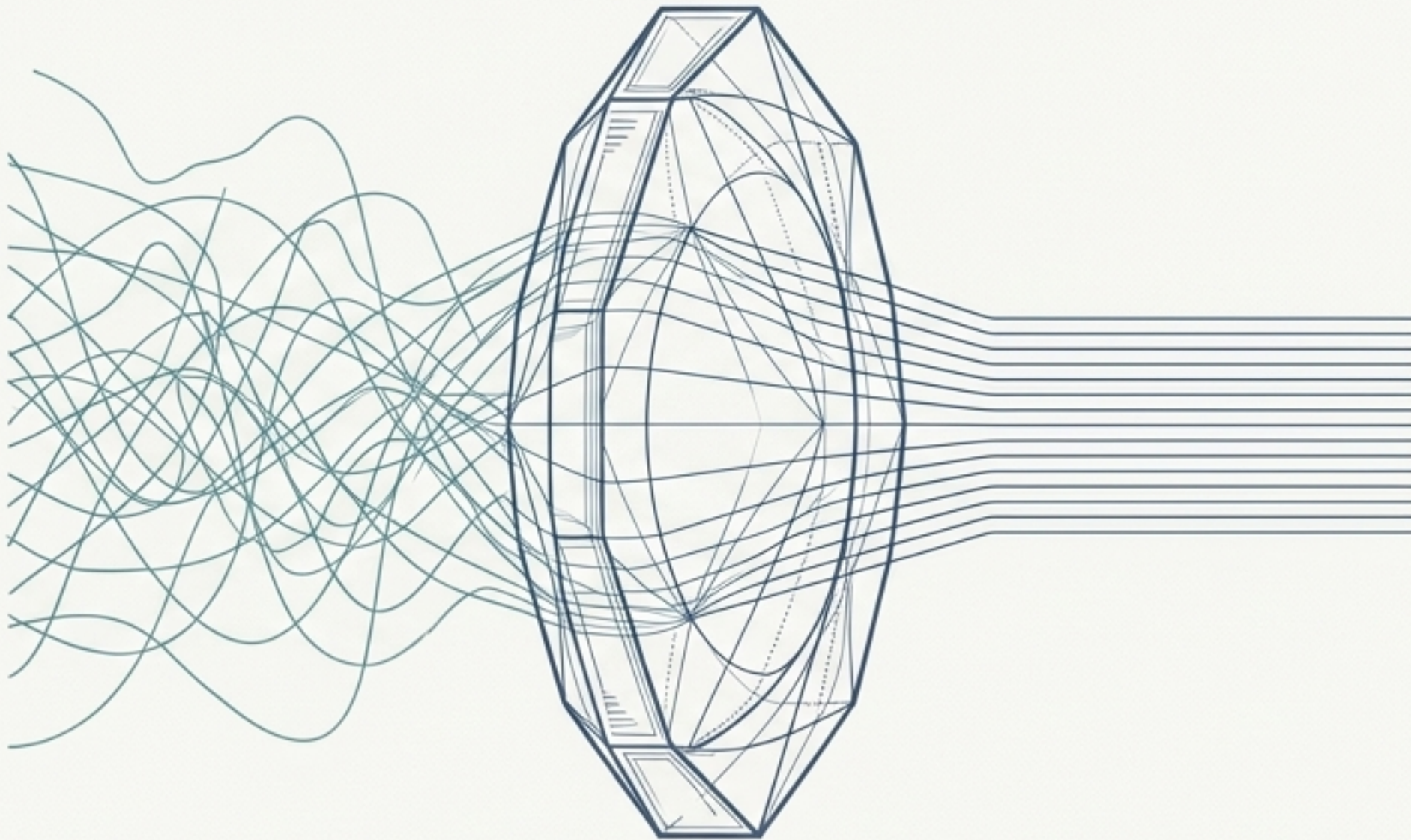


The Missing Mechanism



4.5 Hz EEG Signature

A New Lens for Biology: The Oscillatory Dynamics Transductive-Bridging Theorem (ODTBT)



Core Haas Grotesk Display Pro Medium

ODTBT is a first-principles framework that models emergence as a function of recursive phase coherence across nested biological structures.

Purpose

It offers a transductive alternative to signal-only or representational models, treating molecular dynamics, electrical phase synchrony, and entropy flow as mutually entangled operators of state.

The Architecture of Coherence

Nested Holons:

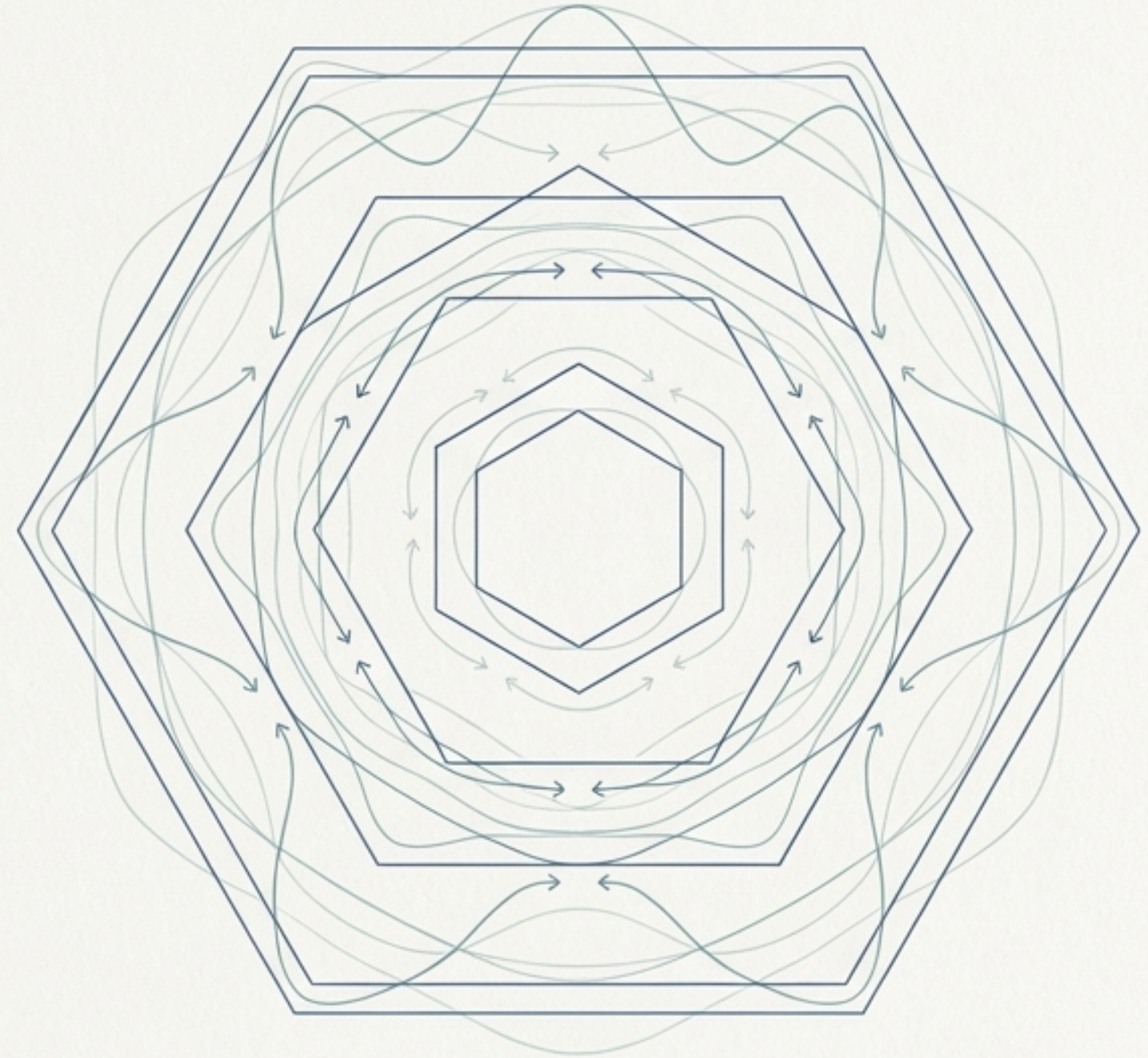
Biological systems are composed of self-similar, phase-structured entities that maintain coherence across scales.

Recursive Coherence:

A topological property based on waveform alignment and recursive feedback, not symbolic information. It is the basis of system stability.

Entropy Management:

Coherence is maintained through the dynamic management of thermodynamic and informational constraints.



TWIST: The System's Tipping Point

Introducing the **Threshold Waveform Interface for State Transformation (TWIST)**.

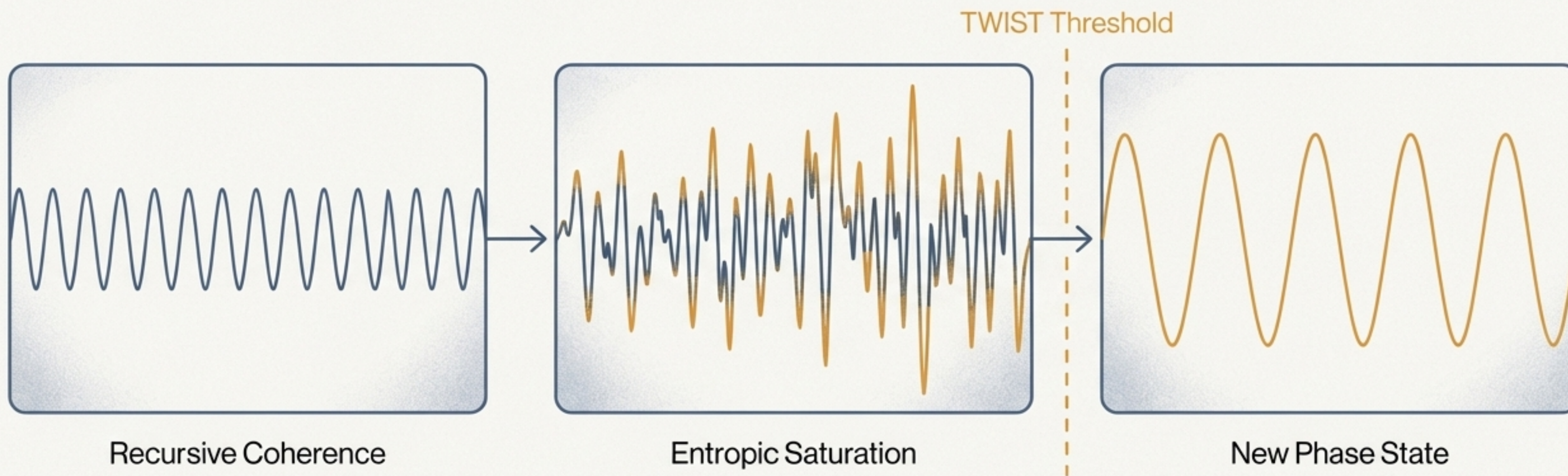
TWIST describes the boundary at which a recursive holon exceeds its phase coherence tolerance and must reconfigure. Systems evolve through internal coherence saturation, driven by entropic drift or molecular instability.



Visualizing the TWIST Transition: From Saturation to Reorganization

Process Description: When entropic load exceeds coherence capacity, the system undergoes a TWIST: a reorganization of phase structure and coherence hierarchy.

Key Insight: This is not a system *failure*, but a phase transition into a new, stable state.

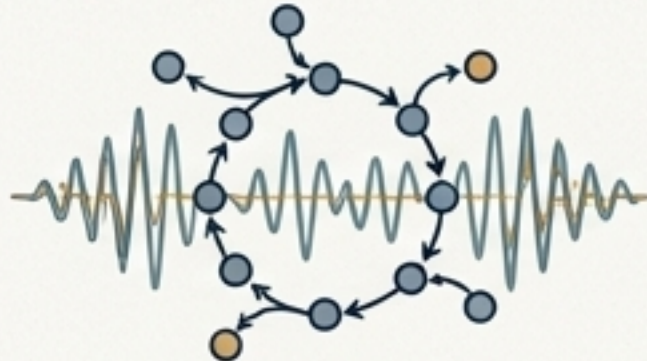


Synthesizing the Causal Chain: From MTHFR to the 4.5 Hz Rhythm



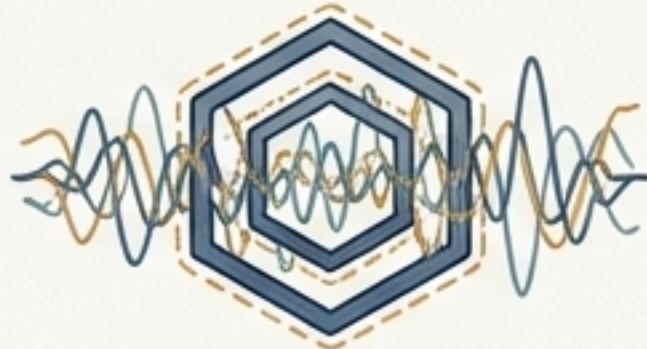
MTHFR Variant (Genetic Level)

Impaired enzymatic efficiency.



Impaired Methylation & Increased Entropy (Metabolic Level)

Molecular inefficiencies accumulate phase strain.



Recursive Strain & Coherence Saturation (System Dynamics)

The nested holons exceed their capacity to maintain coherence.



TWIST Transition (Phase Collapse)

The system crosses a threshold and is forced to reorganize its phase structure.



4.5 Hz Rhythm & Alpha Suppression (Observable EEG Signature)

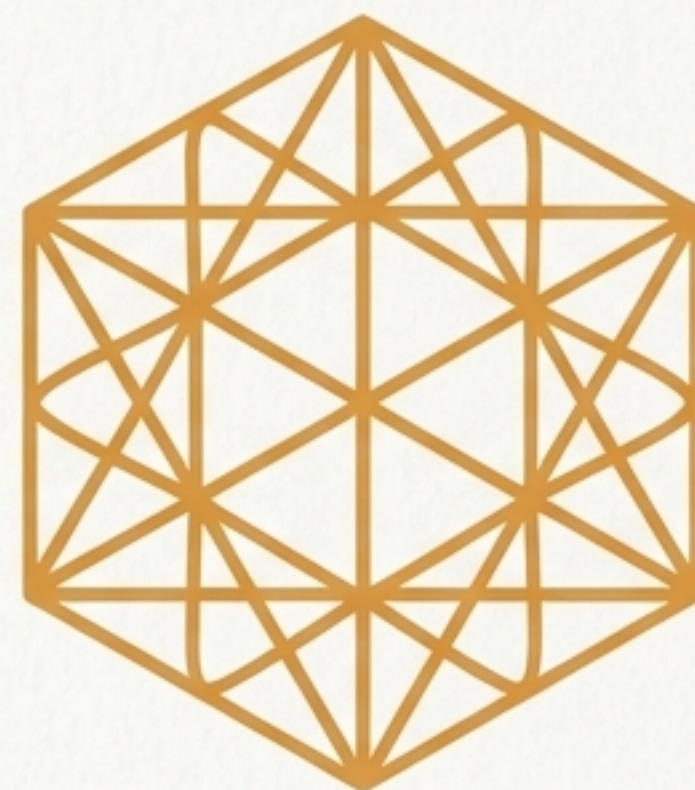
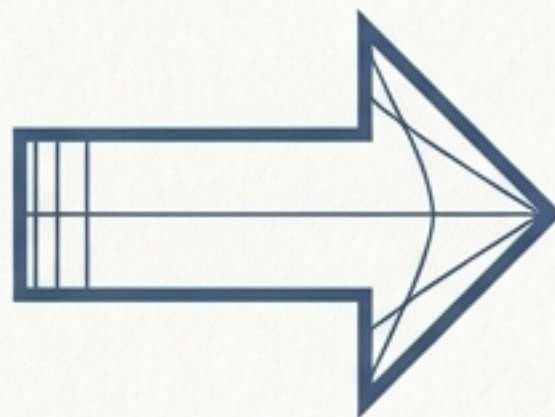
The signature of the new, stable, lower-energy state.

Not Dysfunction, But a Signature of Reorganization

Old View: Dysfunction



ODTBT View: Reorganization



Key Takeaway: The 4.5 Hz rhythm is not noise or a symptom of dysfunction. It is the observable phase signature of a system that has reorganized into a new, stable, but lower-energy state—a **post-saturation attractor basin**.

Implication: This EEG pattern is a biophysical expression of **recursive strain accumulation**, providing a real-time indicator of where metabolic inefficiencies have crossed a **TWIST threshold**.

A New Paradigm: Coherence Topology Diagnostics

PAST



Behavioral Observation

PRESENT



Genotyping

FUTURE

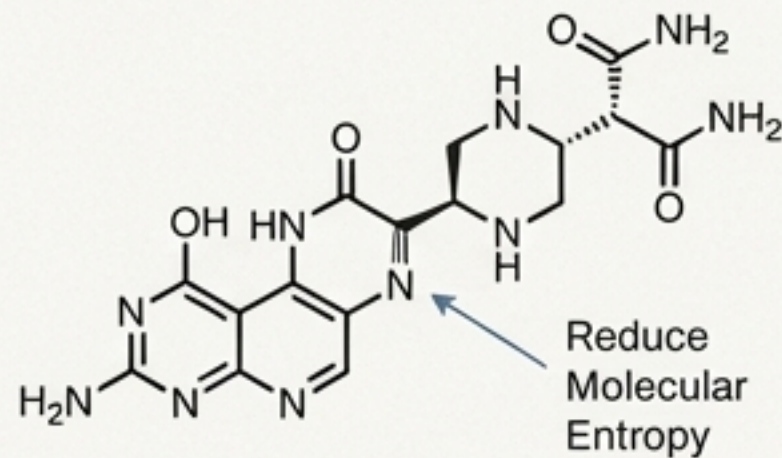


Phase-State Mapping

- **The Shift:** Move from relying solely on behavioral screening to incorporating “**phase-informed diagnostic profiles**.”
- **Proposal:** EEG signatures like the 4.5 Hz rhythm can serve as **biomarkers of coherence topology**, mapping where in the phase hierarchy the system has reorganized under entropic load.
- **Benefit:** Enables earlier identification of **subphenotypes** not always detectable through behavior or static genetic analysis alone.

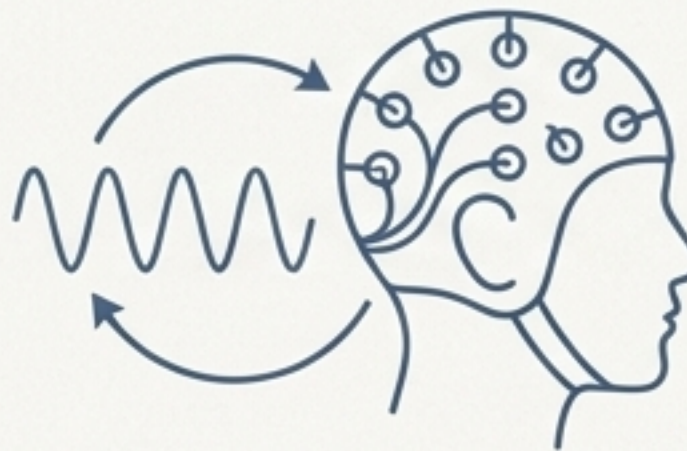
Phase-Informed Interventions: Restoring Recursive Resilience

Interventions can be designed to target specific phase domains and restore flexibility to systems that have reorganized under strain.



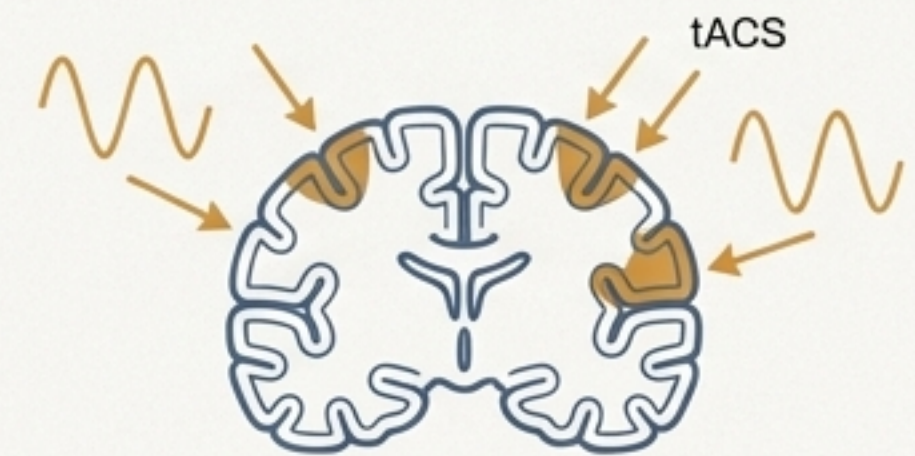
Metabolic

Folate supplementation to reduce molecular entropy at the base of the coherence architecture.



Neurofeedback

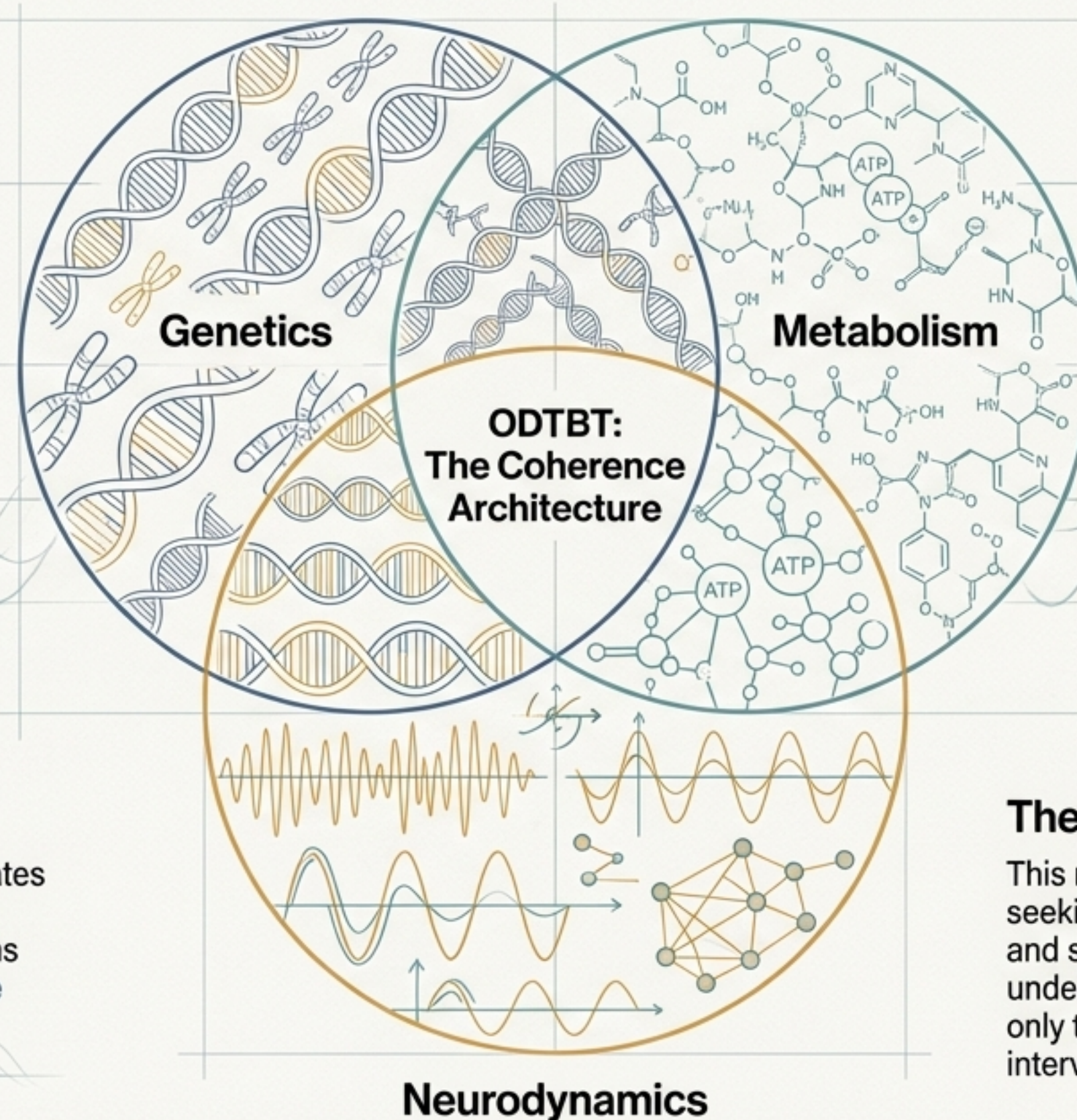
EEG-based entrainment to guide the system toward higher-frequency coherence attractors.



Neuromodulation

Transcranial Alternating Current Stimulation (tACS) calibrated to the TWIST-sensitive bandwidth to soften phase collapse at cortical hubs

A Unified Model of Genotype, Metabolism, and Neurodynamics



The Vision

ODTBT offers a framework that integrates insights from molecular genetics, neuroenergetics, and recursive systems theory into a single, unified **coherence architecture**.

The Concluding Message

This model invites a shift in perspective: from seeking to 'fix' a broken system to understanding and supporting a system that has adapted under recursive strain. The challenge is not only to detect recursive failure, but to develop interventions that **restore phase integrity**.